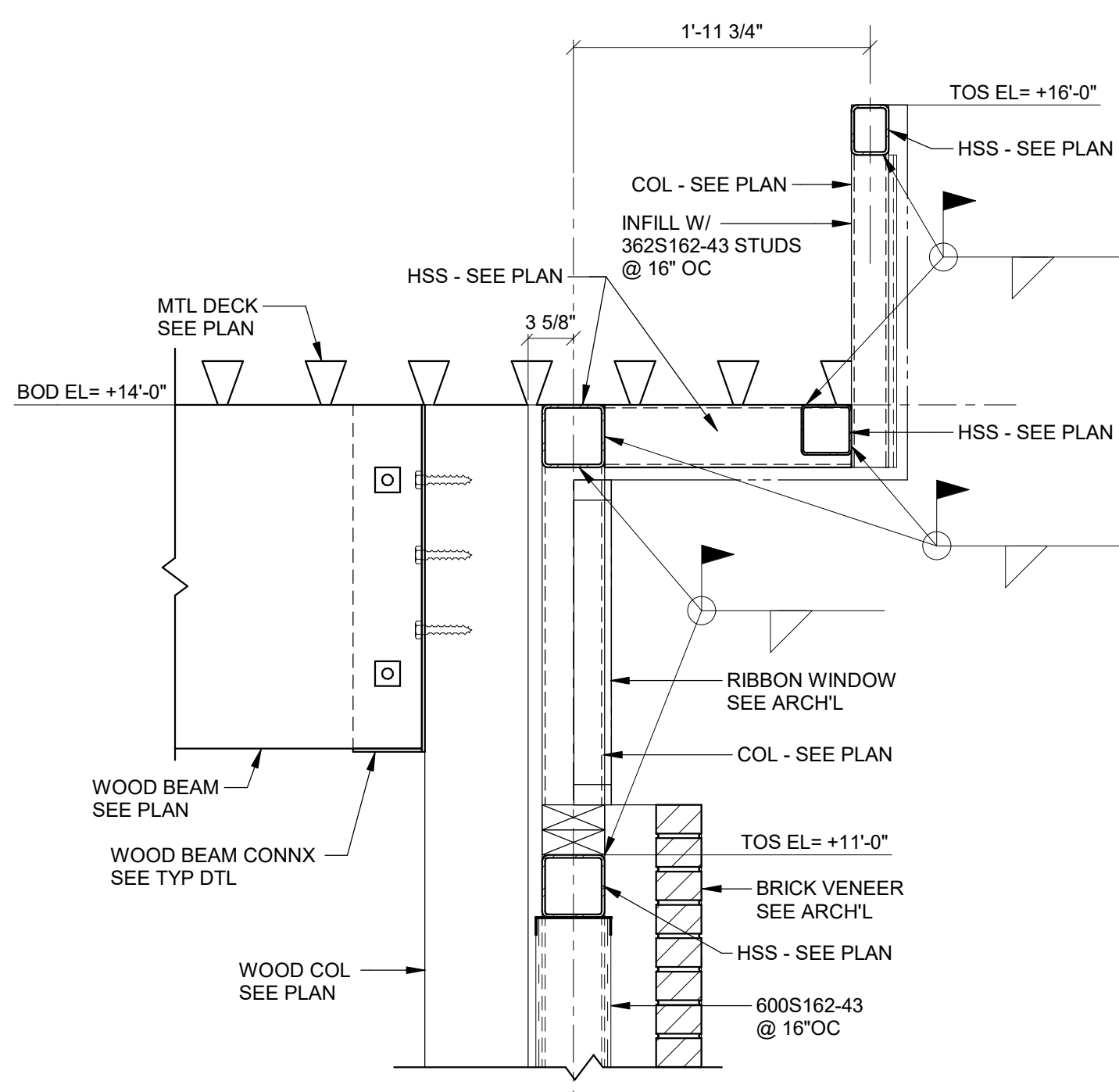
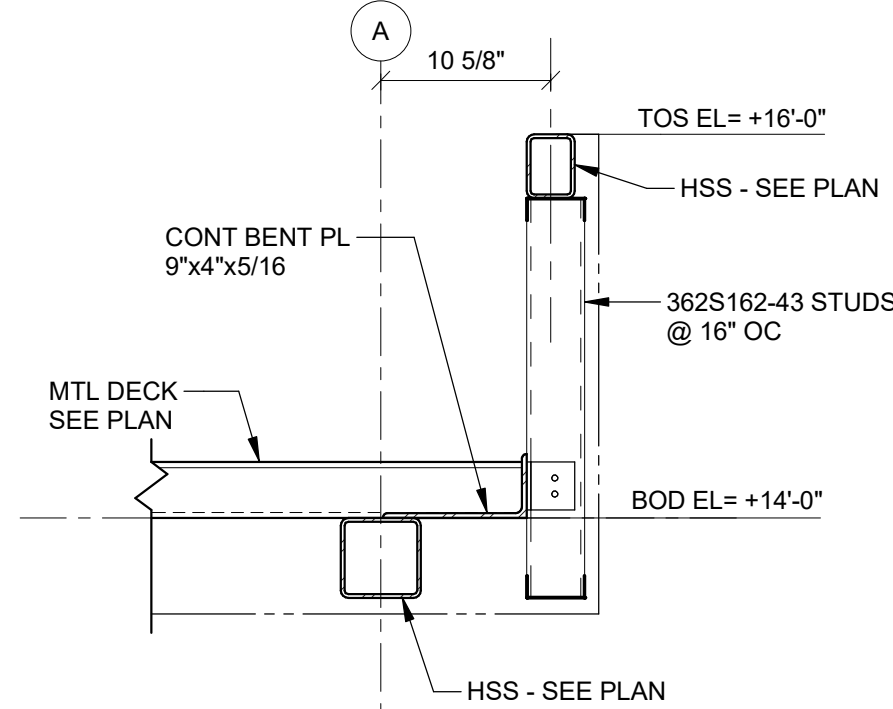


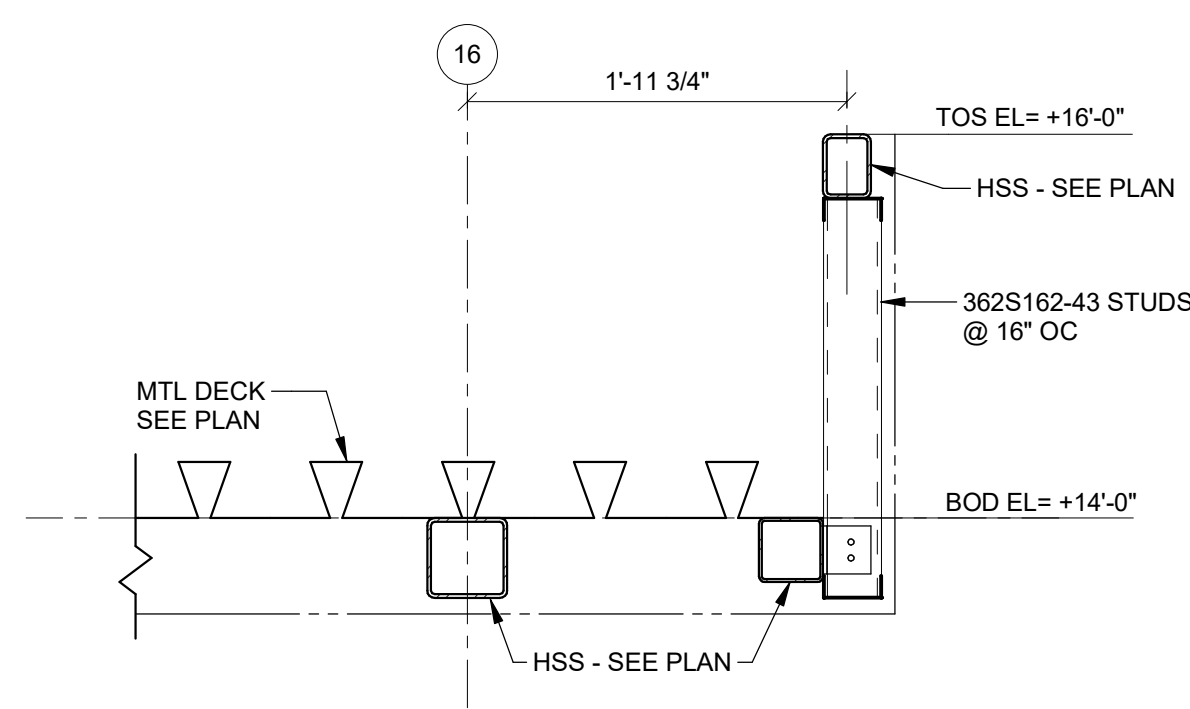
SECTION 1
SCALE: 1" = 1'-0"
S3.01



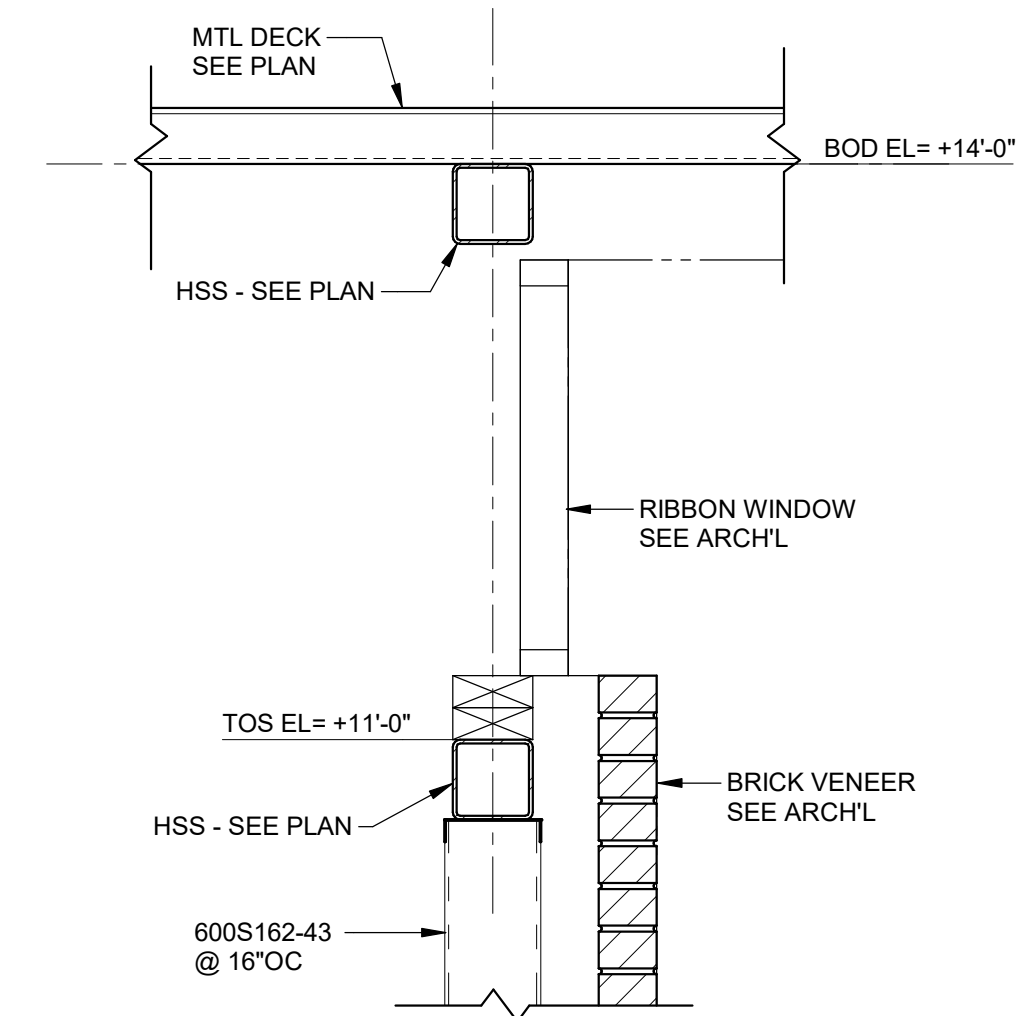
SECTION 2
SCALE: 1" = 1'-0"
S3.01



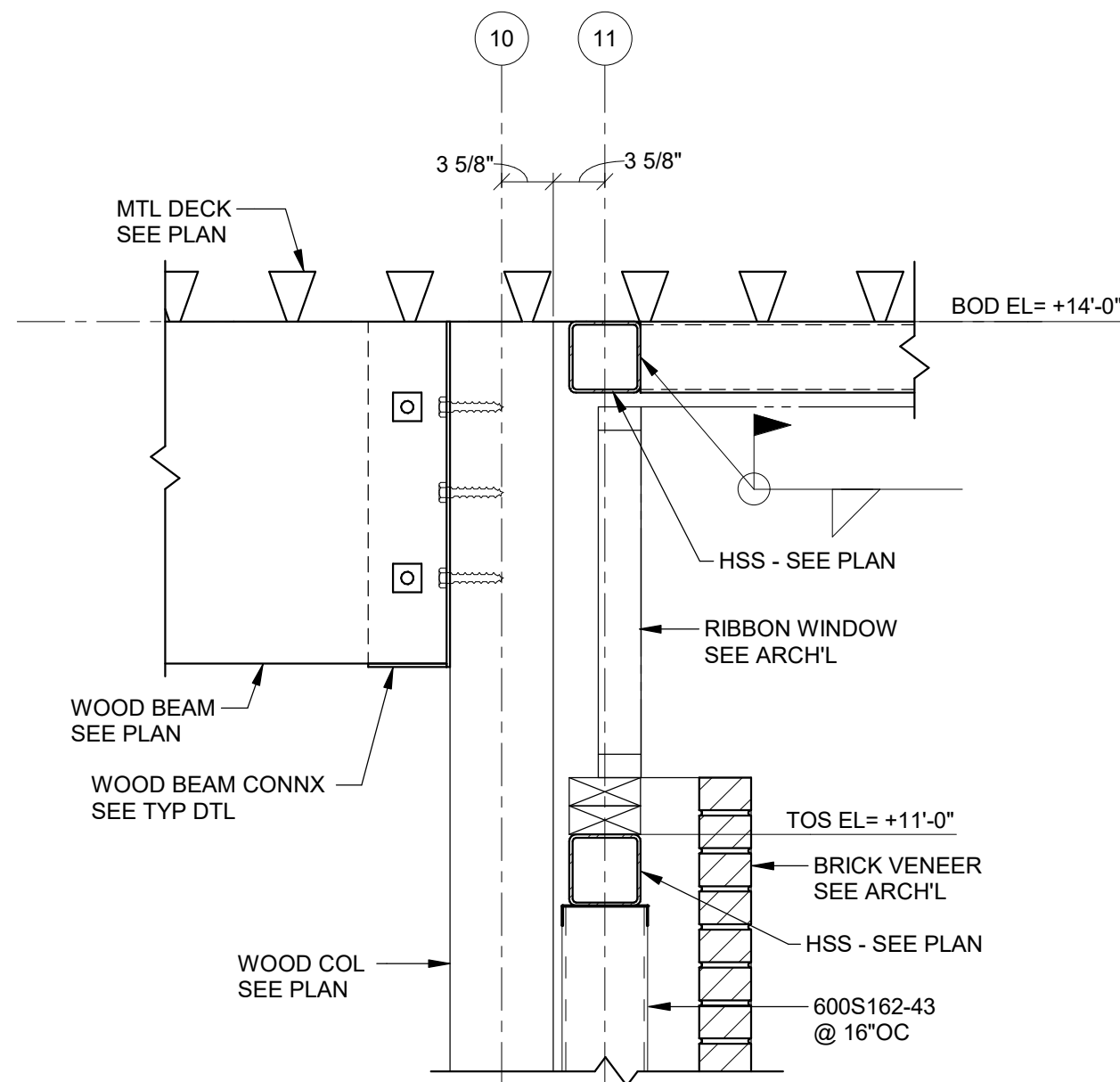
SECTION 3
SCALE: 1" = 1'-0"
S3.01



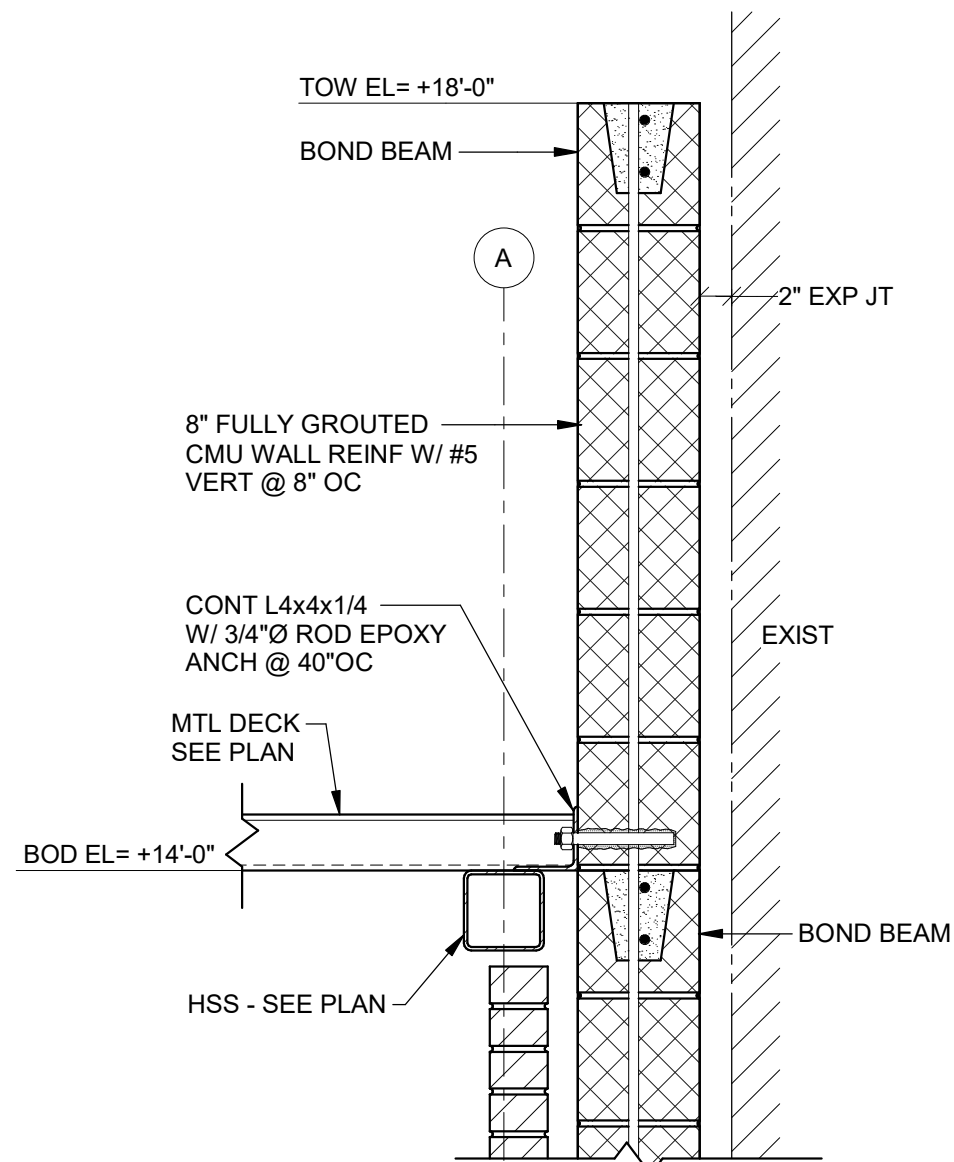
SECTION 4
SCALE: 1" = 1'-0"
S3.01



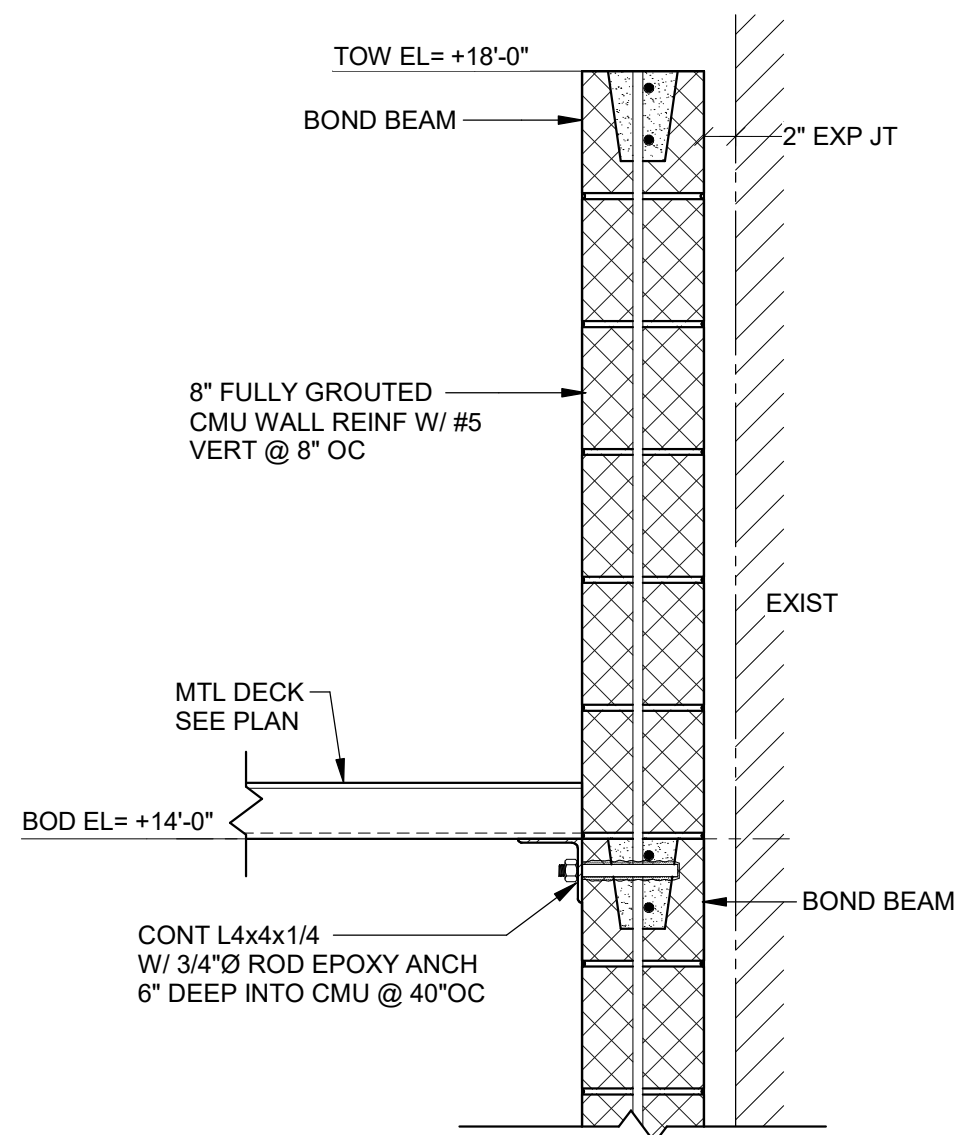
SECTION 5
SCALE: 1" = 1'-0"
S3.01



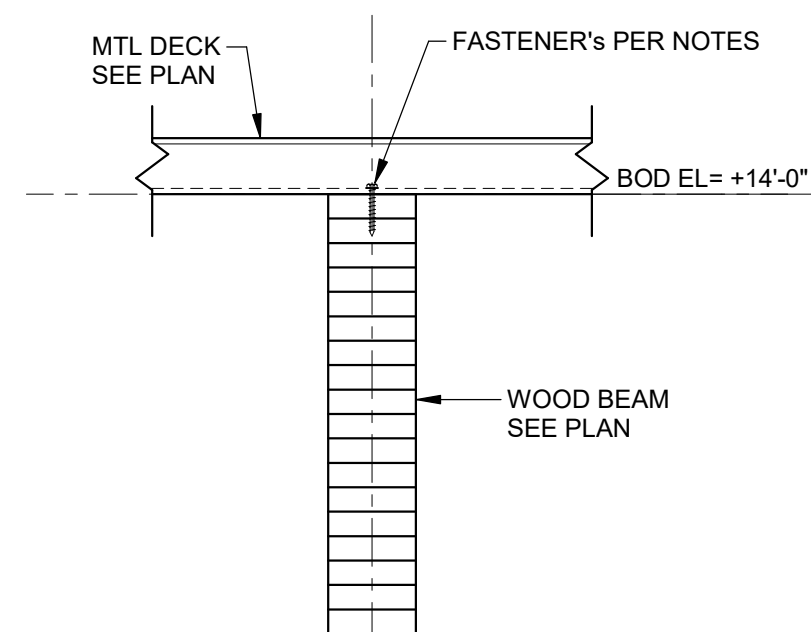
SECTION 6
SCALE: 1" = 1'-0"
S3.01



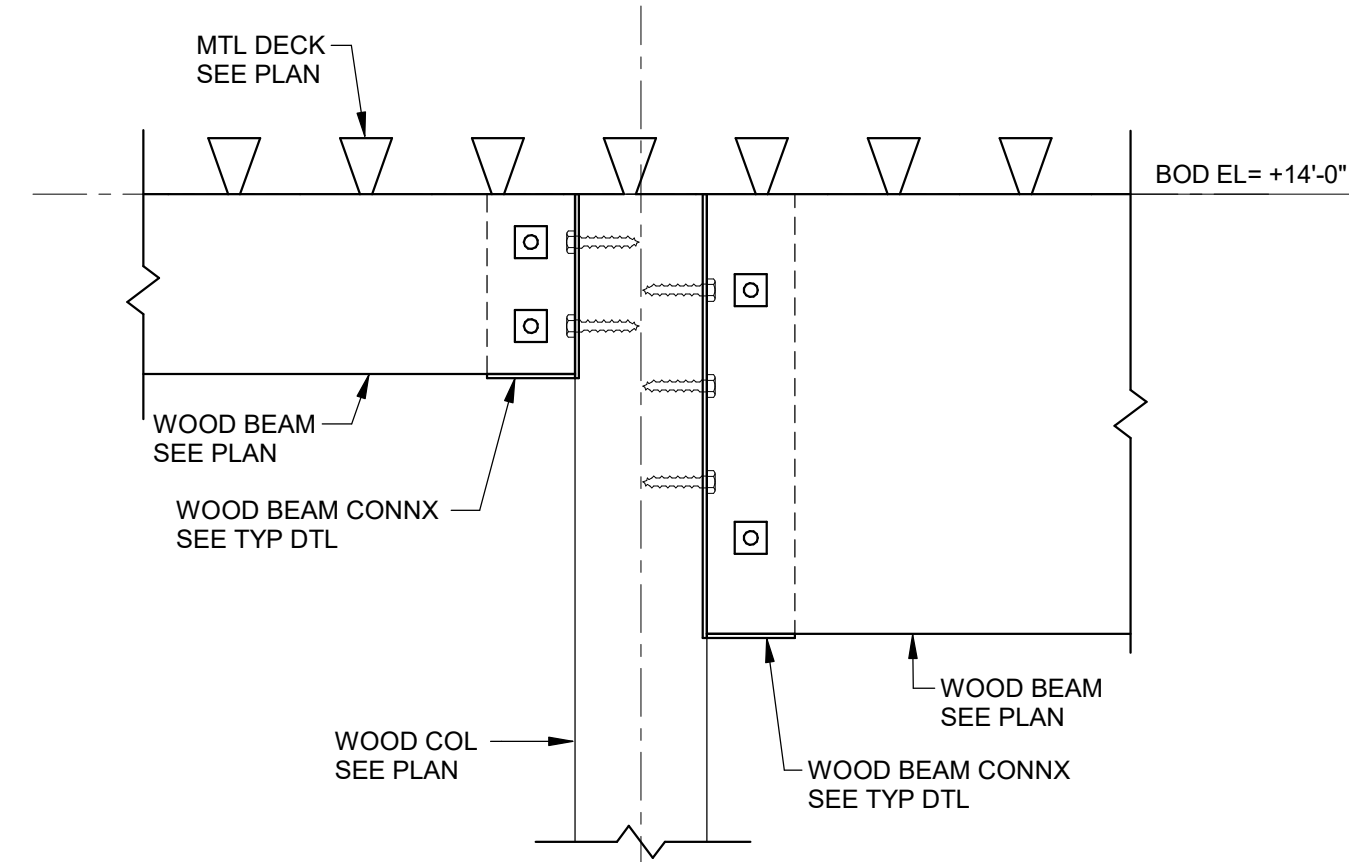
SECTION 7
SCALE: 1" = 1'-0"
S3.01



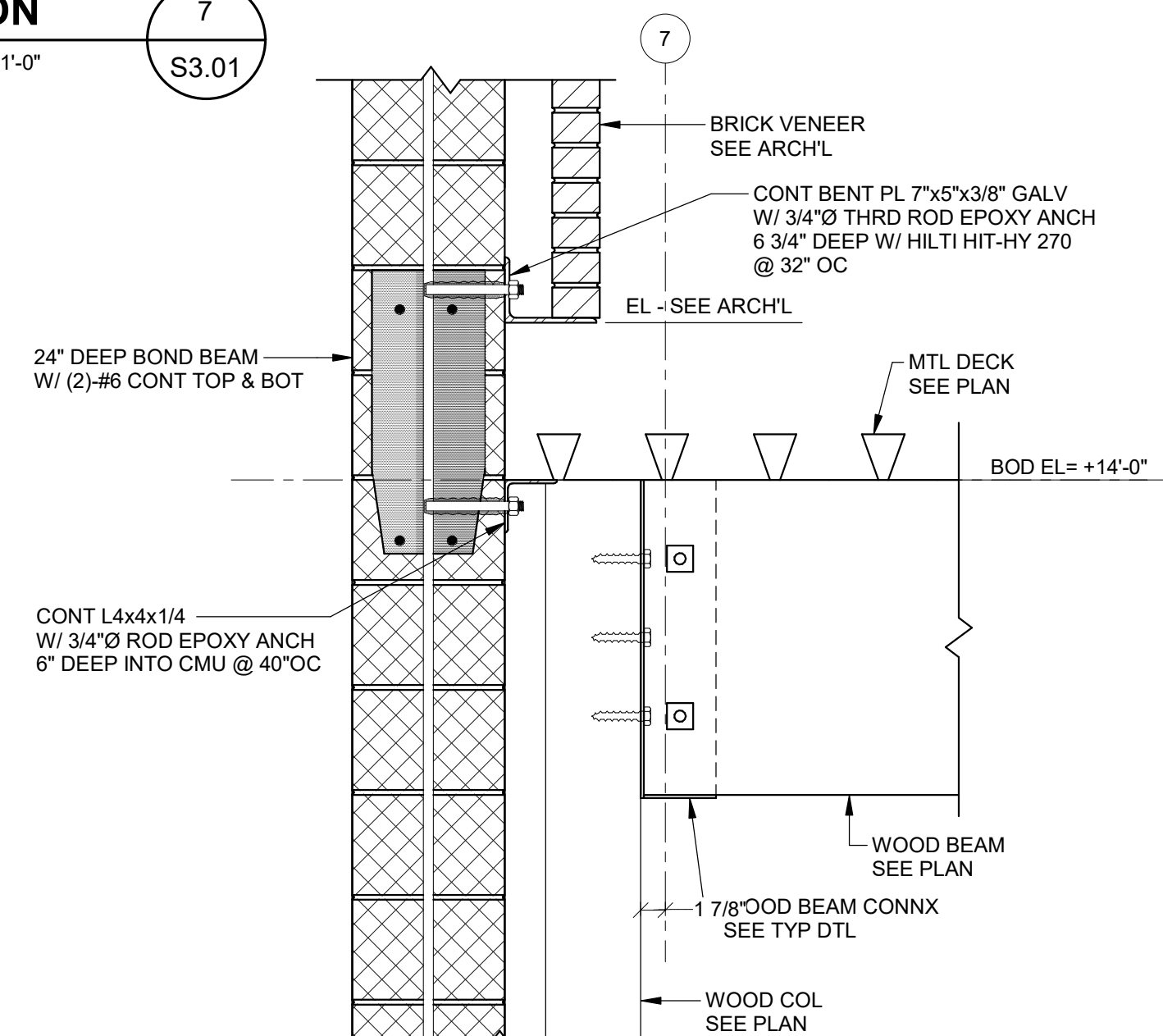
SECTION 8
SCALE: 1" = 1'-0"
S3.01



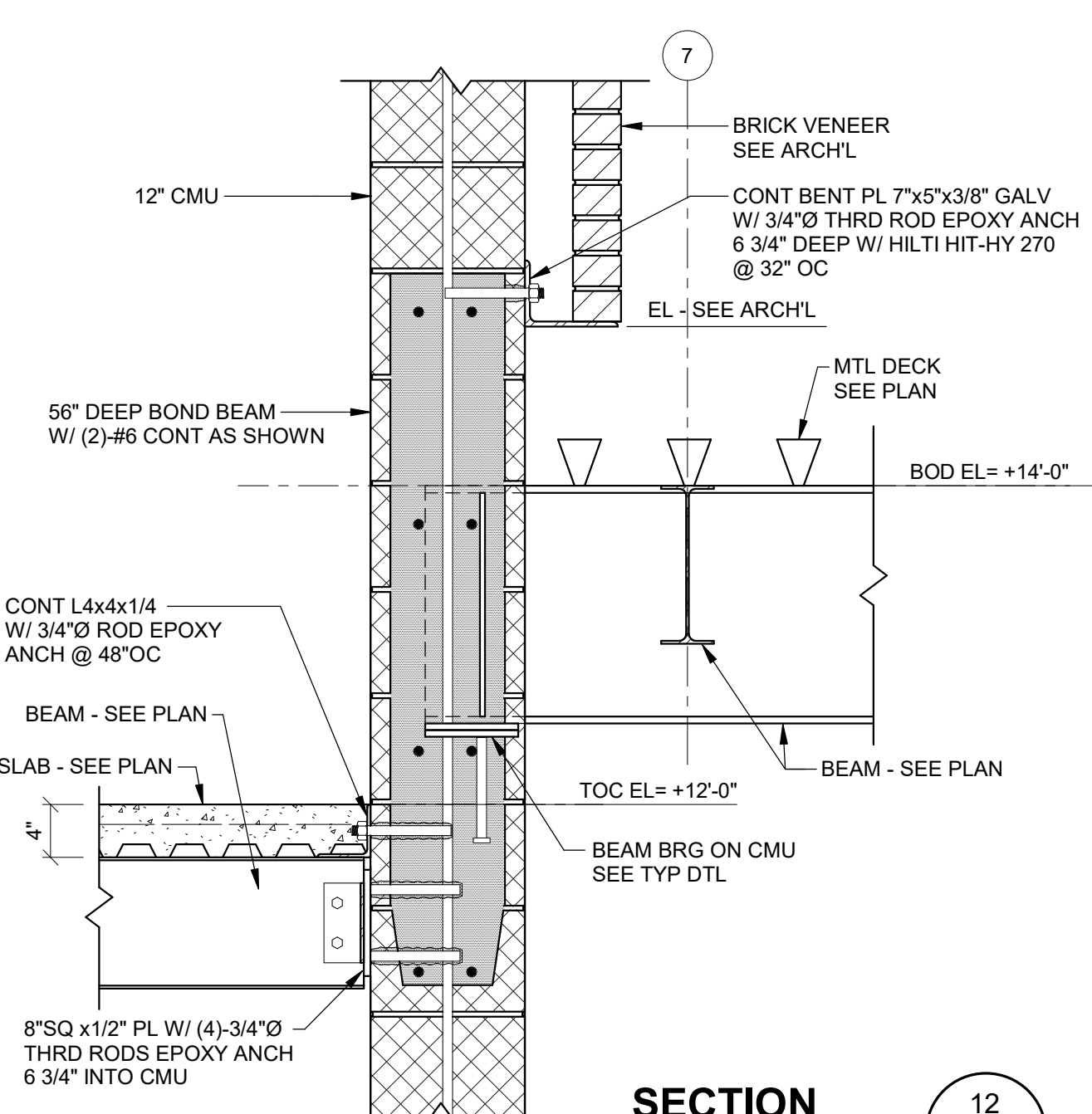
SECTION 9
SCALE: 1" = 1'-0"
S3.01



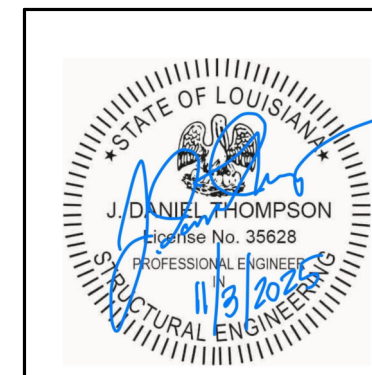
SECTION 10
SCALE: 1" = 1'-0"
S3.01



SECTION 11
SCALE: 1" = 1'-0"
S3.01



SECTION 12
SCALE: 1" = 1'-0"
S3.01



CONSULTING ENGINEERS 3003 KNIGHT STREET, SUITE 120 SHREVEPORT, LOUISIANA 71105 phone: 318-425-7452 fax: 318-425-4622 www.AFJMC.com	
ENGINEER:	J. DANIEL THOMPSON, PE, SE
LICENSE NO.:	35628
THESE DRAWINGS DO NOT INCLUDE NECESSARY COMPONENTS FOR CONSTRUCTION SAFETY 25-033	

COPYRIGHT NOTICE:
THIS ENGINEERING DRAWING SHALL BE USED ONLY PURSUANT TO THE AGREEMENT WITH AFJMC. NO OTHER USE, DISSEMINATION OR DUPLICATION MAY BE MADE WITHOUT PRIOR WRITTEN CONSENT OF AFJMC. ALL COMMON LAW RIGHTS OF COPYRIGHT AND OTHERWISE ARE HEREBY SPECIFICALLY RESERVED.

TBA STUDIO
ARCHITECTURE
103 Cypress Street
West Monroe, LA 71291
Tel. 318.340.1550
Fax. 318.998.1315
www.tbastudio.com

TBA

SCHOOL OF CONSTRUCTION PRACTICE
LAB BUILDING, UNIVERSITY OF
LOUISIANA MONROE
507 Filhiol Ave., Monroe, LA 71203

DRAWING REVISIONS

No.	Description	Date

DRAWN BY: JDT

CHECKED BY: JDT

SHEET

S3.01

Date: NOV 2025
Project No.: 24-0059

File Name:

DESCRIPTION:

FRAMING SECTIONS